



Quebec Bridge Disaster

August 29, 1907

A 17 Month Commemorative Calendar





On August 29, 1907, the unfinished Quebec bridge collapsed.
Seventy-five lives were lost,
thirty-three of whom were Kahnawa'kehró:non.
This publication is in honor of those men and their families.



Michael Kanenriio Adams
Laurent Awennahawi Angus
Thomas Kahratoton Bruce
James Tekahonwensere D'Ailleboust
Louis Sateiokwires D'Ailleboust
Joseph Orite D'Ailleboust
Joseph Oserase Deer
Thomas Taiohawi Deer
Noe Tioneratathe Diome
James Kaionwakenrat Goodleaf
Louis Oronhiatakon Jocks
Frank Sakokenhiatha Kerby
Angus Tekaneratensere Leaf
Joseph Tekiatenhnawen Lefebvre
Joseph Katistsaraken Mitchell
John Tehoronhiathe Morris
Andrew Kaientiio Rice

Louis Aneratinetha Albany
Angus Kanhonwanoron Blue
Angus Ariwakeron D'Ailleboust
Joseph Tekaronhiensere D'Ailleboust
Louis Aronhiowanen D'Ailleboust
Peter Otsitsiakete D'Ailleboust
Louis Tewahennote Deer
Mitchell Kanietakeron Delisle
Joseph Thawennaieri French
John Skawennatson Jacco
Thomas Kanenharoton Jocks
Napoleon Kahionhakeron Lahache
Louis Oserase Lee
James Oniakehta Mitchell
Angus Atenharha Montour
John Tewaserake Norton



Published by: Tewatohnhi'saktha, whose mission is to stimulate and enhance Kahnawá:ke's Economic Growth by investing in people and businesses, as well as other economic opportunities.

Photographs and Captions: Royal Commission on Quebec Bridge Inquiry Collection (1908), Library and Archives Canada

Printing: Wendy Walker, By the Rapids Embroidery & Promotional Products

Design and Layout: Lisa Lahache, Tewatohnhi'saktha





TSOTHOHRHA/DECEMBER 2008



Commemorating Our Loss

Sun	Mon	Tue	Wed	Thu	Fri	Sat
	1	2	3	4	5	6
7	8	9	10	11	12	13
14	15	16	17	18	19	20
21	22	23	24	25	26	27
28	29	30	31			

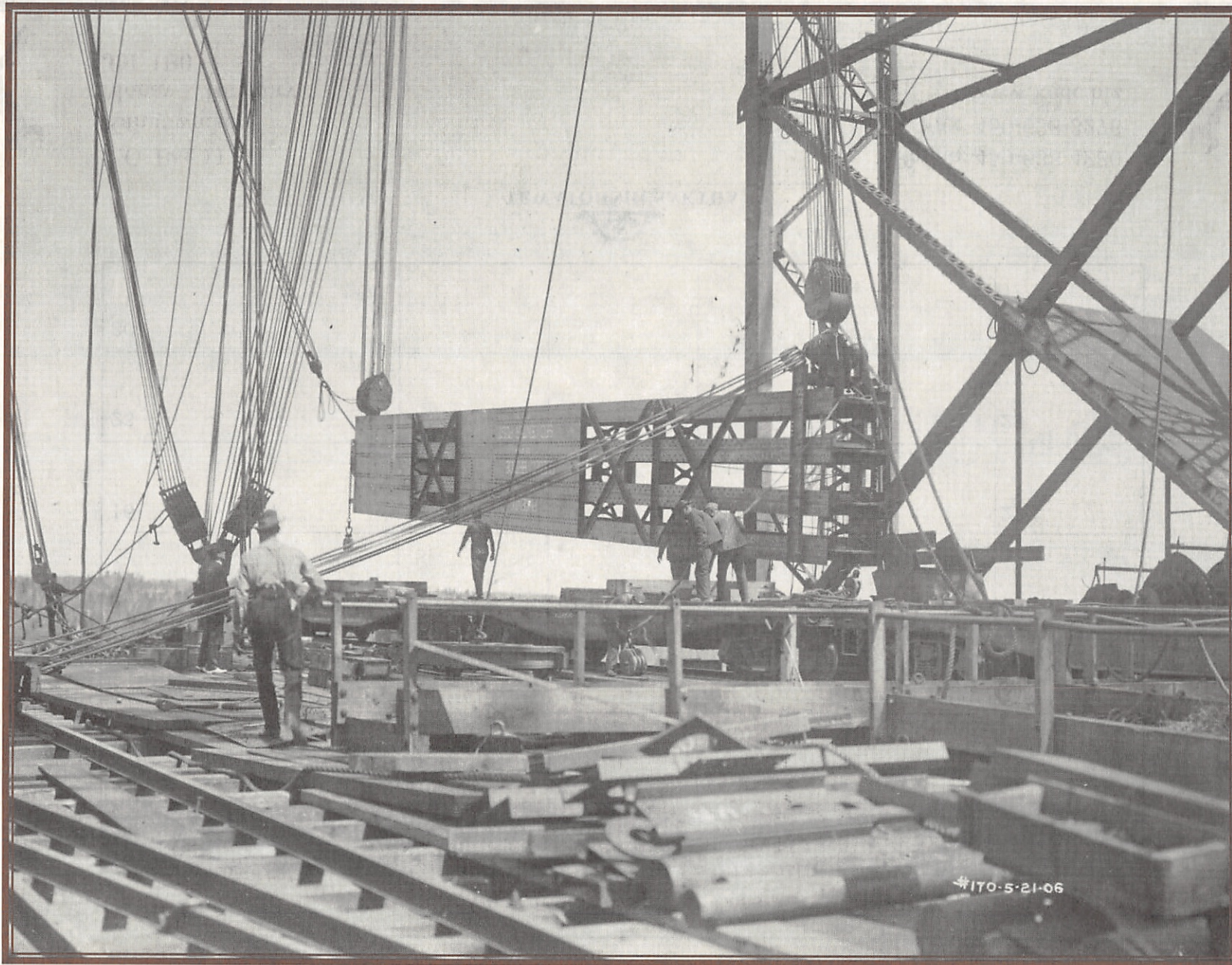


TEWATOHNHI'SAKTHA

P.O. Box 1110
Kahnawá:ke
Mohawk Territory
J0L 1B0

Phone: 450-638-4280
Fax: 450-638-3276
www.kedc.biz





View of a center post section being lifted by the traveler.
(May 21, 1906)



KENTENHKO:WA/NOVEMBER 2008



Commemorating Our Loss

Sun	Mon	Tue	Wed	Thu	Fri	Sat
						1
2	3	4	5	6	7	8
9	10	11	12	13	14	15
16	17	18	19	20	21	22
23	24	25	26	27	28	29
30						



TEWATOHNHI'SAKTHA

P.O. Box 1110
Kahnawá:ke
Mohawk Territory
J0L 1B0

Phone: 450-638-4280
Fax: 450-638-3276
www.kedc.biz





View near the top of post P.1.R. Note the line of the diagonal
eyebars at A.T.I. and the top chord of the eyebars A.A.



KENTENHA/OCTOBER 2008



Commemorating Our Loss

Sun	Mon	Tue	Wed	Thu	Fri	Sat
			1	2	3	4
5	6	7	8	9	10	11
12	13	14	15	16	17	18
19	20	21	22	23	24	25
26	27	28	29	30	31	



TEWATOHNI'SAKTHA

P.O. Box 1110
Kahnawá:ke
Mohawk Territory
J0L 1B0

Phone: 450-638-4280
Fax: 450-638-3276
www.kedc.biz





View from the west of the wreckage inside the main pier. Note the twisted web of A-8-L; the lower end post of P.4 inside C.P.6L; the splice plates between A-11-L and A-10-L cantilever arm; CP5L; and the spawling of the masonry coping which was struck by A-11-L



SESKEHKO:WA/SEPTEMBER 2008



Commemorating Our Loss

Sun	Mon	Tue	Wed	Thu	Fri	Sat
	1	2	3	4	5	6
7	8	9	10	11	12	13
14	15	16	17	18	19	20
21	22	23	24	25	26	27
28	29	30				



TEWATOHNHI'SAKTHA

P.O. Box 1110
Kahnawá:ke
Mohawk Territory
J0L 1B0

Phone: 450-638-4280
Fax: 450-638-3276
www.kedc.biz





General view from the bank looking northwards.



SESKEHA/AUGUST 2008

Commemorating Our Loss

Sun	Mon	Tue	Wed	Thu	Fri	Sat
					1	2
3	4	5	6	7	8	9
10	11	12	13	14	15	16
17	18	19	20	21	22	23
24	25	26	27	28	29	30
31						

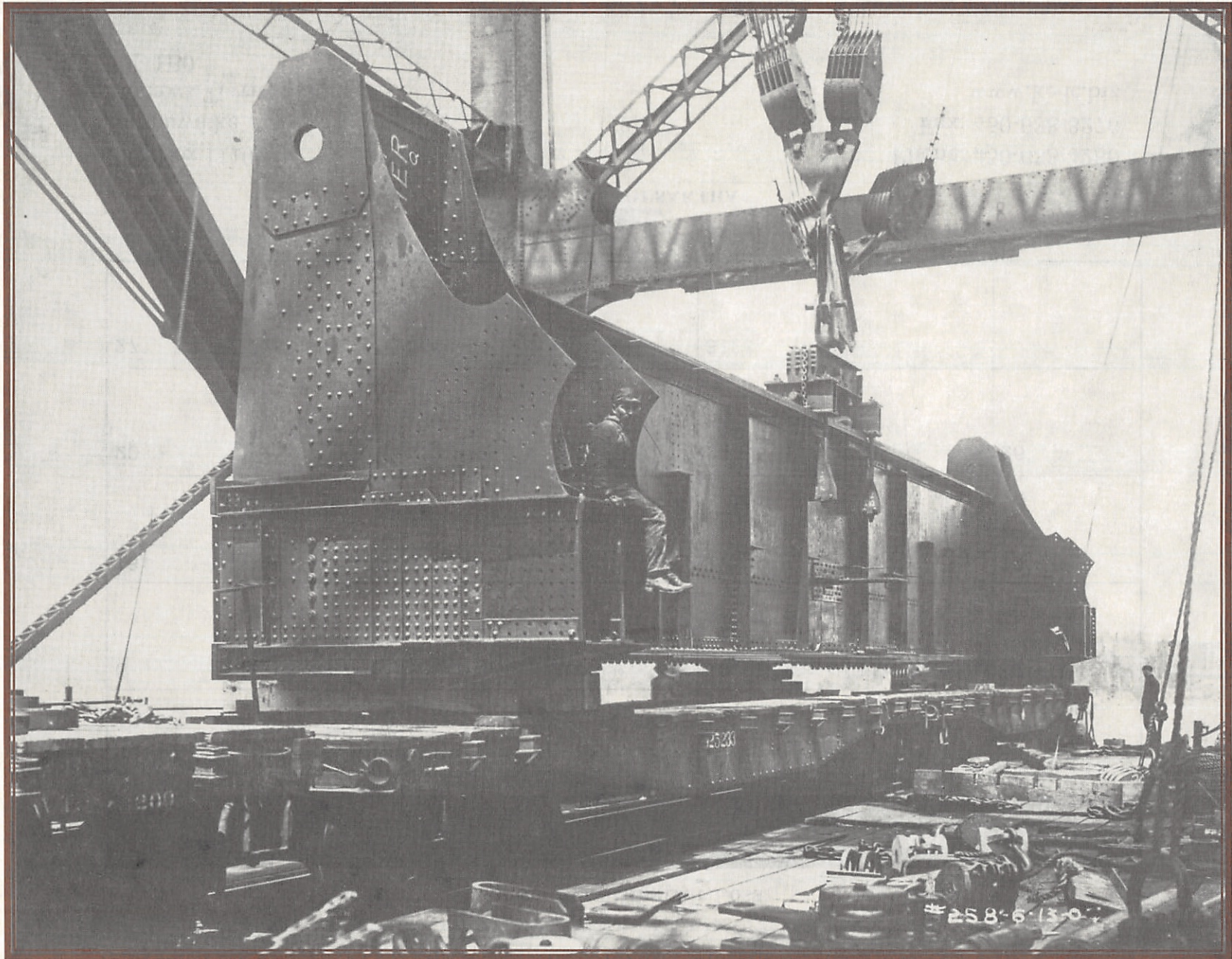


TEWATOHNHI'SAKTHA

P.O. Box 1110
Kahnawá:ke
Mohawk Territory
JOL 1B0

Phone: 450-638-4280
Fax: 450-638-3276
www.kedc.biz





View showing the end floor beam of the suspended span.
(June 13, 1907)



OHIARIHKO:WA/JULY 2008

Commemorating Our Loss

Sun	Mon	Tue	Wed	Thu	Fri	Sat
		1	2	3	4	5
6	7	8	9	10	11	12
13	14	15	16	17	18	19
20	21	22	23	24	25	26
27	28	29	30	31		



TEWATOHNHI'SAKTHA

P.O. Box 1110
Kahnawá:ke
Mohawk Territory
J0L 1B0

Phone: 450-638-4280
Fax: 450-638-3276
www.kedc.biz





View from the east of wreckage inside main pier. Note the condition of C.P.6, which is standing in the hole dug by the shoe; the wreck of C.P.4 across the top of the pier, and the trusting of P.4 inside C.P..



OHIARI:HA/JUNE 2008

Commemorating Our Loss

Sun	Mon	Tue	Wed	Thu	Fri	Sat
1	2	3	4	5	6	7
8	9	10	11	12	13	14
15	16	17	18	19	20	21
22	23	24	25	26	27	28
29	30					

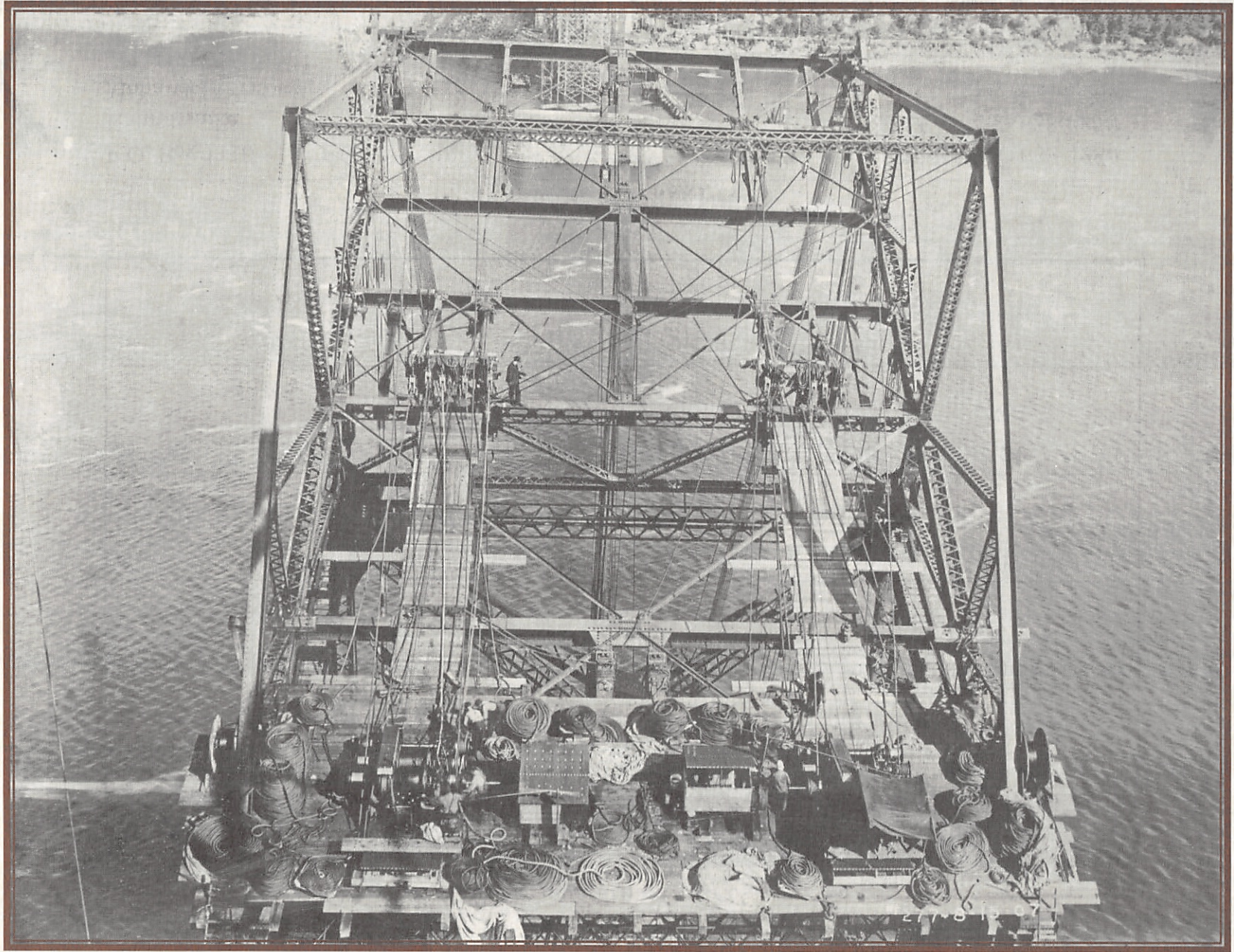


TEWATOHNI'SAKTHA

P.O. Box 1110
Kahnawá:ke
Mohawk Territory
J0L 1B0

Phone: 450-638-4280
Fax: 450-638-3276
www.kedc.biz





View showing the little traveler whilst erecting.
(August 15, 1907)



ONERAHTOHKO:WA/MAY 2008



Commemorating Our Loss

Sun	Mon	Tue	Wed	Thu	Fri	Sat
				1	2	3
4	5	6	7	8	9	10
11	12	13	14	15	16	17
18	19	20	21	22	23	24
25	26	27	28	29	30	31



TEWATOHNHI'SAKTHA

P.O. Box 1110
Kahnawá:ke
Mohawk Territory
J0L 1B0

Phone: 450-638-4280
Fax: 450-638-3276
www.kedc.biz





View from the west near the anchor pier. Note the towershells; the anchor bolts pulled out of the masonry; the broken tenon girder, which transmitted the horizontal wind reaction to its anchorage.



ONERAHTOK:HA/APRIL 2008



Commemorating Our Loss

Sun	Mon	Tue	Wed	Thu	Fri	Sat
		1	2	3	4	5
6	7	8	9	10	11	12
13	14	15	16	17	18	19
20	21	22	23	24	25	26
27	28	29	30			

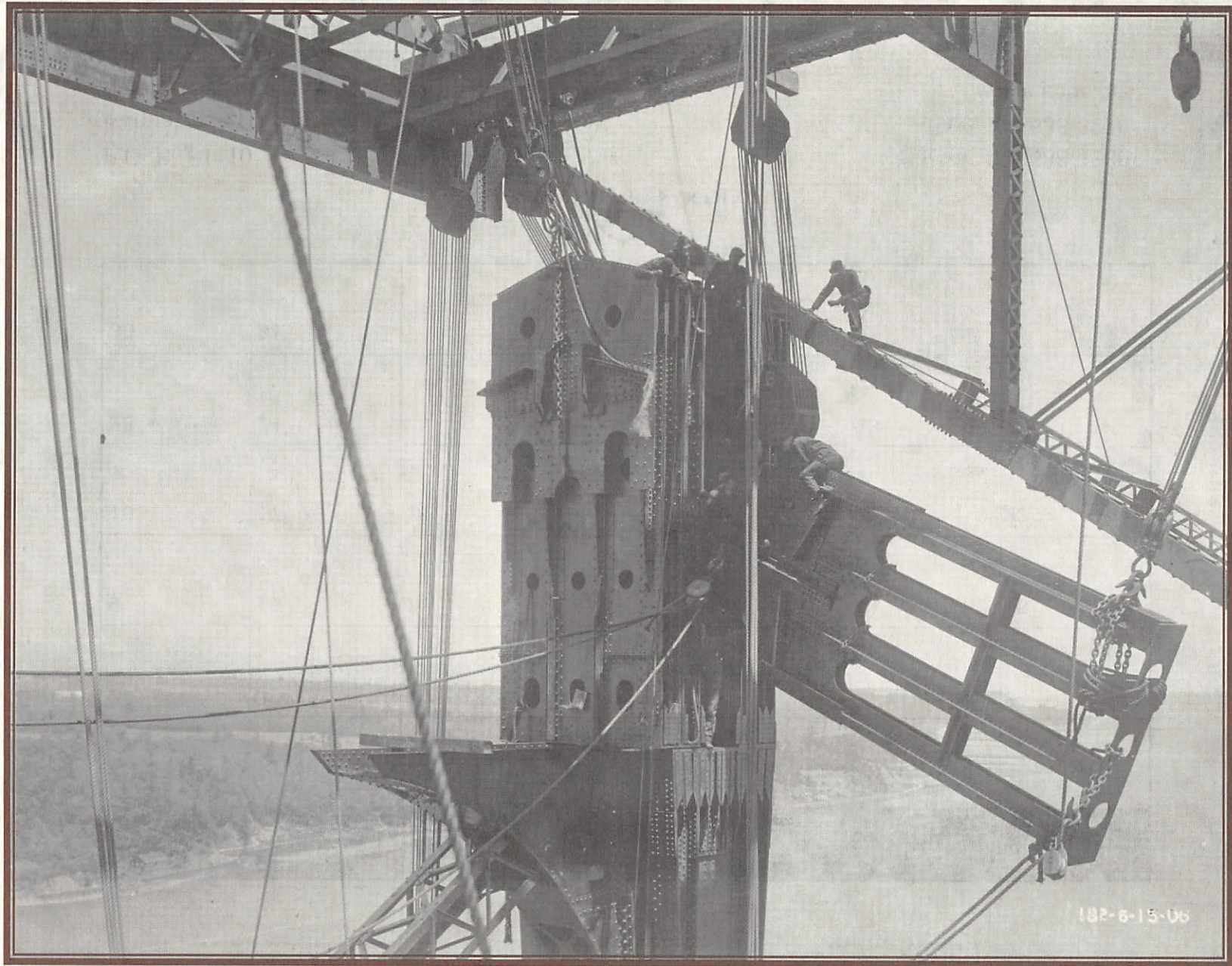


TEWATOHNNI'SAKTHA

P.O. Box 1110
Kahnawá:ke
Mohawk Territory
J0L 1B0

Phone: 450-638-4280
Fax: 450-638-3276
www.kedc.biz





View showing the erection of a center post cap. Note that the cap could not be transported and erected as one piece and was built in three sections.
(June 15, 1906)



ENNISKO:WA/MARCH 2008



Commemorating Our Loss

Sun	Mon	Tue	Wed	Thu	Fri	Sat
						1
2	3	4	5	6	7	8
9	10	11	12	13	14	15
16	17	18	19	20	21	22
23	24	25	26	27	28	29
30	31					



TEWATOHNI'SAKTHA

P.O. Box 1110
Kahnawá:ke
Mohawk Territory
J0L 1B0

Phone: 450-638-4280
Fax: 450-638-3276
www.kedc.biz





General view looking towards the main pier.
Note the upper chord on the right.



ENNISKA/FEBRUARY 2008



Commemorating Our Loss

Sun	Mon	Tue	Wed	Thu	Fri	Sat
					1	2
3	4	5	6	7	8	9
10	11	12	13	14	15	16
17	18	19	20	21	22	23
24	25	26	27	28	29	

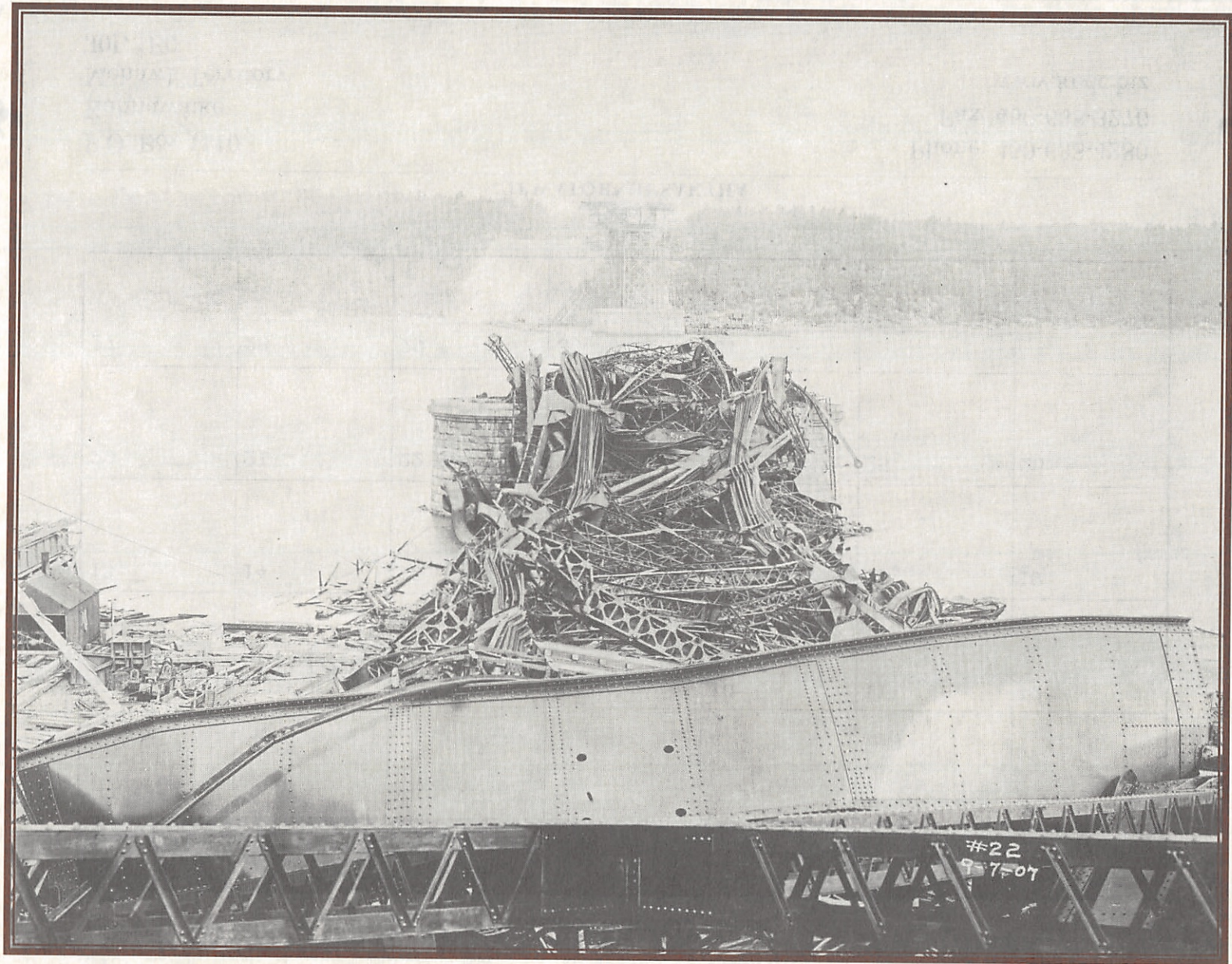


TEWATOHNHI'SAKTHA

P.O. Box 1110
Kahnawá:ke
Mohawk Territory
J0L 1B0

Phone: 450-638-4280
Fax: 450-638-3276
www.kedc.biz





General view from the anchor pier northwards.
Note the position of the wreckage on the main pier.



TSOTHOHRHKO:WA/JANUARY 2008

Commemorating Our Loss

Sun	Mon	Tue	Wed	Thu	Fri	Sat
		1	2	3	4	5
6	7	8	9	10	11	12
13	14	15	16	17	18	19
20	21	22	23	24	25	26
27	28	29	30	31		

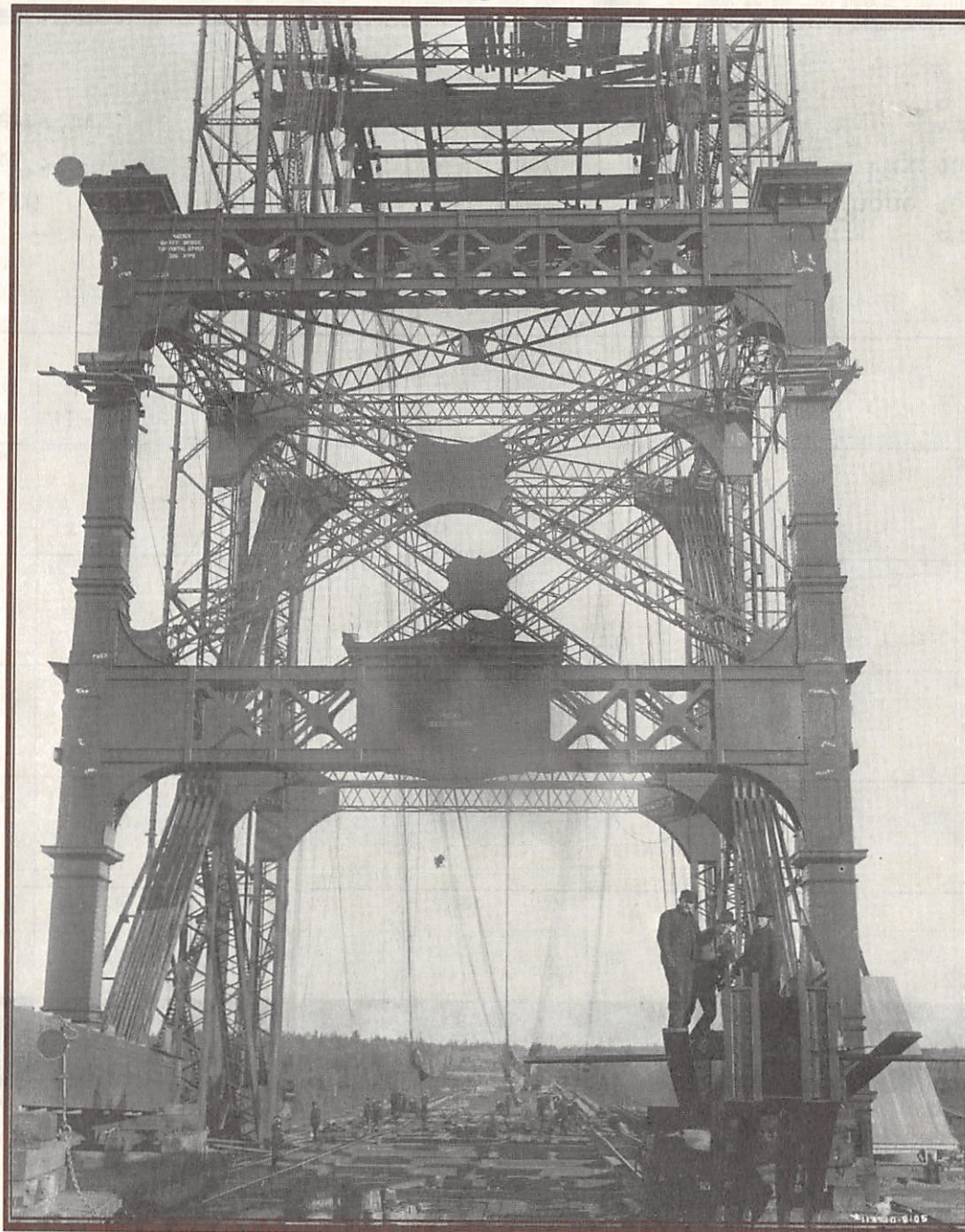


TEWATOHNHI'SAKTHA

P.O. Box 1110
Kahnawá:ke
Mohawk Territory
J0L 1B0

Phone: 450-638-4280
Fax: 450-638-3276
www.kedc.biz





View from portal.
(October 9, 1905)



Tsothohrha/December 2007

Commemorating Our Loss

Sun	Mon	Tue	Wed	Thu	Fri	Sat
						1
2	3	4	5	6	7	8
9	10	11	12	13	14	15
16	17	18	19	20	21	22
23	24	25	26	27	28	29
30	31					



TEWATOHNHI'SAKTHA

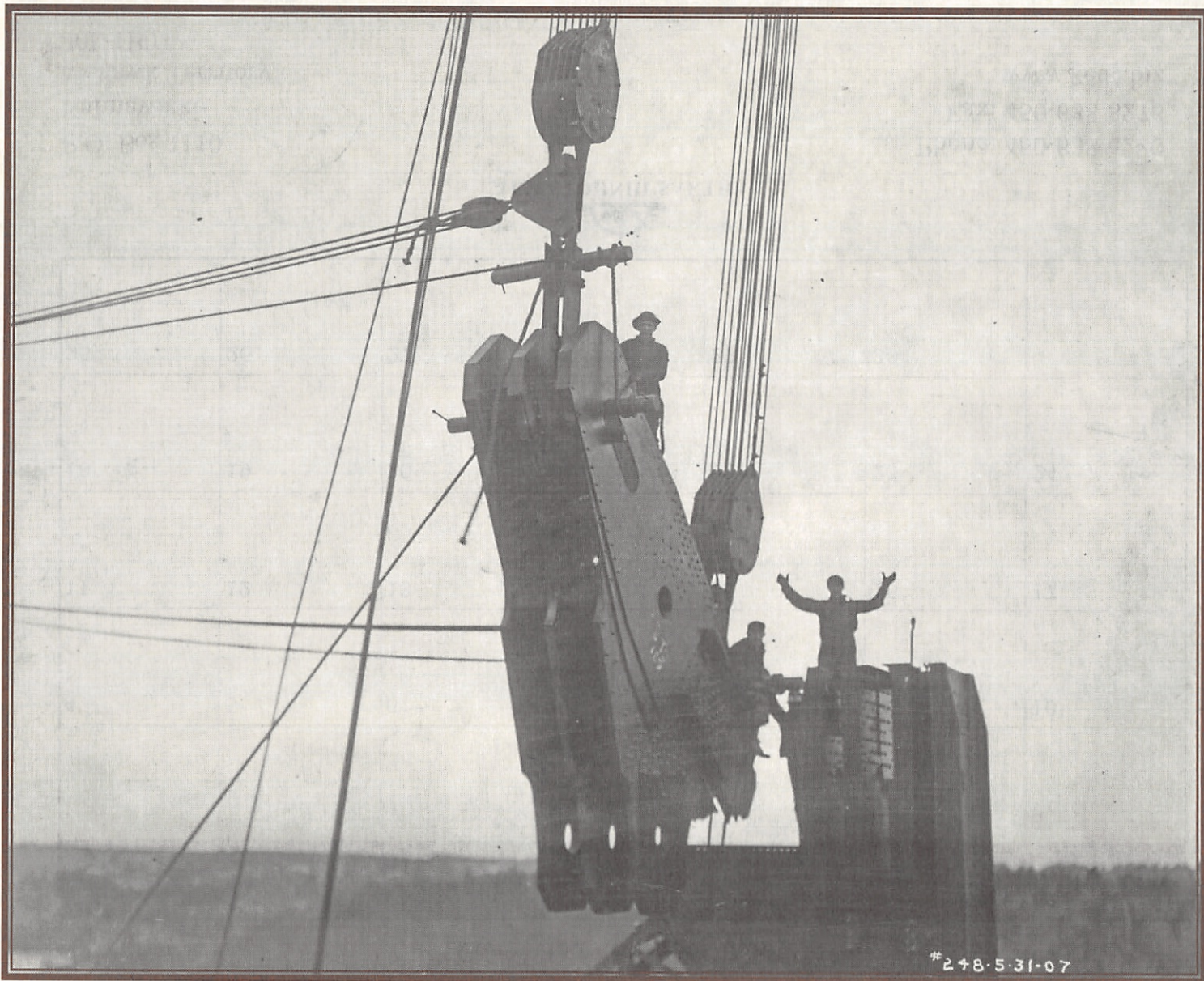
P.O. Box 1110
Kahnawá:ke
Mohawk Territory
J0L 1B0

Phone: 450-638-4280

Fax: 450-638-3276

www.kedc.biz





View showing the detail at the top of the end post of the cantilever arm.
(May 13, 1907)



KENTENHKO:WA/NOVEMBER 2007

Commemorating Our Loss

Sun	Mon	Tue	Wed	Thu	Fri	Sat
				1	2	3
4	5	6	7	8	9	10
11	12	13	14	15	16	17
18	19	20	21	22	23	24
25	26	27	28	29	30	



TEWATOHNHI'SAKTHA

P.O. Box 1110
Kahnawá:ke
Mohawk Territory
J0L 1B0

Phone: 450-638-4280
Fax: 450-638-3276
www.kedc.biz





Shows complete chaos to be seen at some points of the wreckage.
This view is interesting only as an indication of the magnitude of the
forces at work during the catastrophe.
Even in this distorted mass there is no evidence of poor material.



KENTENHA/OCTOBER 2007



Commemorating Our Loss

Sun	Mon	Tue	Wed	Thu	Fri	Sat
	1	2	3	4	5	6
7	8	9	10	11	12	13
14	15	16	17	18	19	20
21	22	23	24	25	26	27
28	29	30	31			

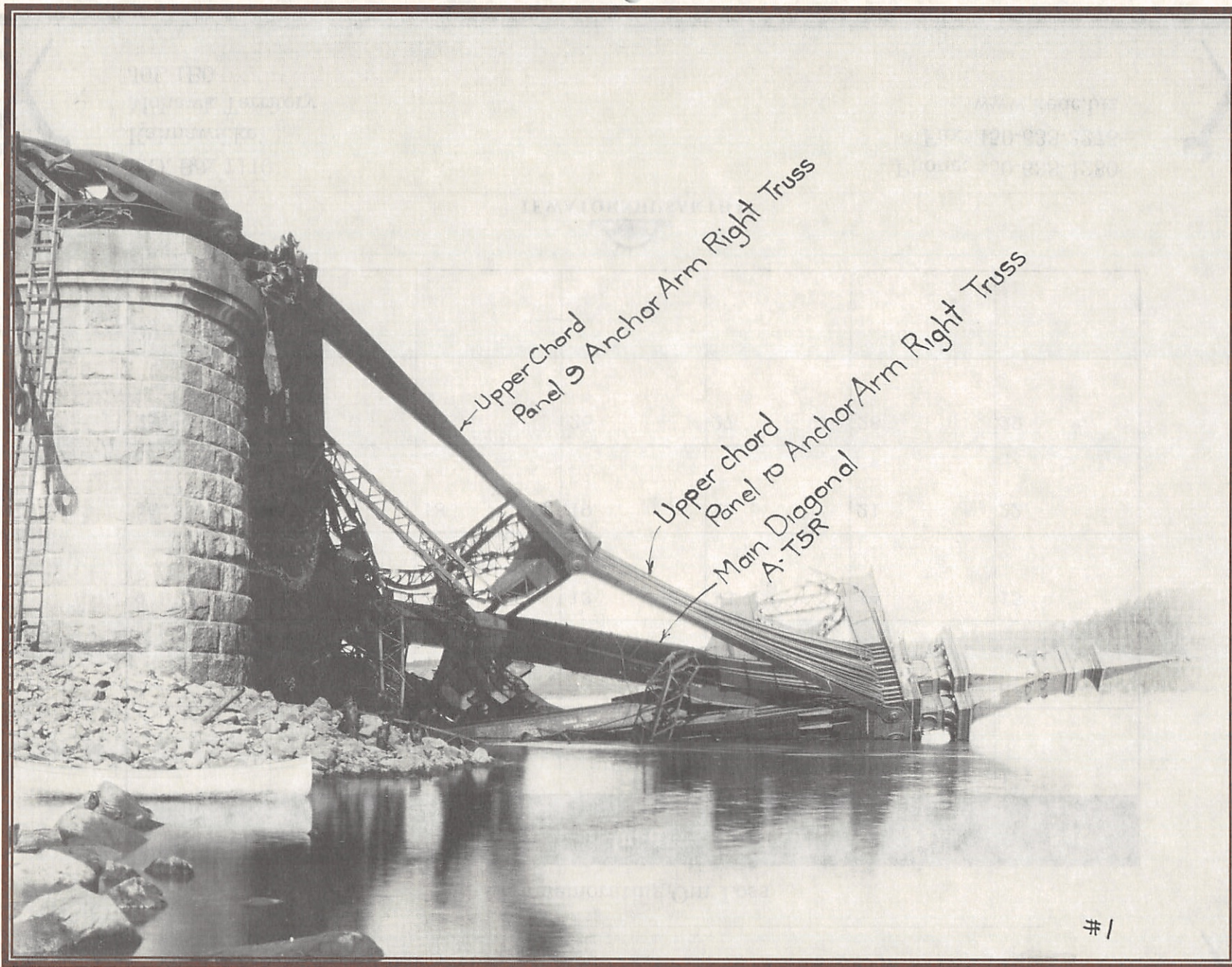


TEWATOHNHI'SAKTHA

P.O. Box 1110
Kahnawá:ke
Mohawk Territory
J0L 1B0

Phone: 450-638-4280
Fax: 450-638-3276
www.kedc.biz





View showing center post, cap, finials, diagonal T.5 and the upper chords in panels 9 & 10, anchor arm. The center post has been practically bent double over the main pier by the drag of the cantilever arm. Note that the end of the pier is clear of wreckage.



SESKEHKO:WA/SEPTEMBER 2007



Commemorating Our Loss

Sun	Mon	Tue	Wed	Thu	Fri	Sat
						1
2	3	4	5	6	7	8
9	10	11	12	13	14	15
16	17	18	19	20	21	22
23	24	25	26	27	28	29
30						



TEWATOHNHI'SAKTHA

P.O. Box 1110
Kahnawá:ke
Mohawk Territory
JOL 1B0

Phone: 450-638-4280

Fax: 450-638-3276

www.kedc.biz





View showing the raising of a set of top chord eyebars.
Note the various tackles. (June 20, 1906)



SESKEHA/AUGUST 2007



Commemorating Our Loss

Sun	Mon	Tue	Wed	Thu	Fri	Sat
			1	2	3	4
5	6	7	8	9	10	11
12	13	14	15	16	17	18
19	20	21	22	23	24	25
26	27	28	29	30	31	



TEWATOHNHI'SAKTHA

P.O. Box 1110
Kahnawá:ke
Mohawk Territory
J0L 1B0

Phone: 450-638-4280

Fax: 450-638-3276

www.kedc.biz





General view of the main pier southwards.
Note the moderate damage to the upper laterals.